



United States
Department of
Agriculture

National
Agricultural
Statistics
Service



Pot 6 (07)

Potatoes 2006 Summary

September 2007

USDA



Table of Contents

	Page
Introduction	2
Narrative	3
Utilization	4
Area, Yield, and Production	
By Season and State	5
By State and United States	12
Disposition	
By Season and State	8
By State and United States	14
Price and Value	
By Season and State	8
By State and United States	14
Market Year Average Price for All Potatoes by State and United States	25
Monthly Prices	26
Processing	
Quantity Used	16
Chips and Shoestrings	17
Stocks	18
Shrinkage and Loss	19
Percent of Stocks by Type	20
Percent of Acreage Planted by Type	21
Acres Planted for Certified Seed	21
Farm Marketings	22
Alaska	24
Varieties of Fall Potatoes	30
Potato Objective Yield Results	34
Potato Size and Grade	36
Information Contacts	39

Introduction

This publication presents 2006 potato estimates of acreage, yield per acre, production, farm disposition, season average price, value, and utilization of sales including processing with historic comparisons. Also included are first of the month stocks of potatoes (December through June) for the 13 major fall potato producing States. Monthly prices, farm marketings, varieties of fall potatoes, percent of acreage planted by type, certified seed acres, objective yield results, and size and grade are also included for selected States. Production, disposition, and value data for Alaska are shown separately.

These estimates are based on information furnished by crop reporters, processors, and cooperating State or Federal Agencies. The various sources include: Market News Service rail and truck shipments, Federal-State inspections, and miscellaneous data available through marketing programs.

Price estimates represent average returns to growers for all uses and for all methods of sale, including the value paid for a government diversion program. These prices are applied to total production to compute value of production and to the quantity sold to compute value of sales. Some unsold potatoes contribute to the value of production, including farm use for seed, feed, home use, and loss. The United States season average price is obtained by weighting State prices by quantities sold.

Potato production, utilization, and value of sales in each State have been classified by seasonal group according to the period (quarter) when the largest supplies are harvested.

The four seasonal groups are as follows:

Season	Usual Time of Harvest
Winter	January through March
Spring	April through June
Summer	July to Mid-September
Fall	September through November

A crop year is associated with the calendar year in which harvest is accomplished. Seasons are not fixed dates but are approximations because of overlapping of harvest before or after the specified season. Generally, the marketing season closely follows harvest except for fall potatoes when marketing from storage may extend through August of the following year. Thus, the marketing year for fall potatoes is from the start of harvest through August of the following year.

2006 Potato Production Up 4 Percent

Total 2006 potato production is estimated at 441 million cwt, up 2 percent from the estimate made in the January *Crop Production 2006 Summary* and 4 percent above the 2005 crop. Harvested area, at 1.12 million acres, increased 3 percent from the record low set a year ago. The average yield of 393 cwt per acre is a record high, up 3 cwt from 2005 and 2 cwt above the previous record high set in 2003.

Seasonal estimates are carried forward from earlier revisions. Winter potato production in 2006 is 4.50 million cwt, a decline of 8 percent from 2005. Harvested area, at 17,500 acres, is down 12 percent from the previous year. The average yield of 257 cwt per acre is up 10 cwt from 2005. Spring potatoes final estimate for 2006, at 19.8 million cwt, increased 6 percent from the previous year. Harvested acres, at 67,500, are up 1 percent from the record low set in 2005. The average yield of 293 cwt per acre is 12 cwt above the 2005 crop. Summer potato production is 18.2 million cwt for 2006, up 3 percent from 2005. Harvested area, at 53,900 acres, is up 5 percent from the record low set the previous year. The average yield of 337 cwt per acre is 5 cwt below the record high set in 2005. Fall potatoes are finalized at 399 million cwt for 2006, up 4 percent from the 2005 crop. Area harvested in 2006 is estimated at 983,000 acres, up 4 percent from a year earlier. The average yield, at 406 cwt per acre, is a record high, 3 cwt above the previous record high set in 2005.

The value of all potatoes sold in 2006 is estimated at \$2.98 billion, up 8 percent from the previous year. The average price, at \$7.33 per cwt, is up \$0.27 from a year earlier. Sales from the 2006 potato crop totaled 407 million cwt, up 4 percent from 2005. Sales account for 92 percent of 2006 production. Non-sales account for 34.6 million cwt, 4 percent above the previous year. Over the past five years, 92 percent of the potatoes grown have been sold. The other 8 percent were either lost (shrinkage and loss) or used on farms where grown (seed, home use, and livestock feed).

Processors used 280 million cwt of raw potatoes from the 2006 crop, up 14 percent from a year earlier. Table stock sales totaled 101 million cwt, 16 percent below the previous year. Seed sales of 23.7 million cwt are up 6 percent from 2005. Sales for livestock feed, at 1.66 million cwt, are down 17 percent from a year earlier.

Potatoes used for chips and shoestrings totaled 67.0 million cwt in 2006, up 31 percent from the previous year. Frozen french fries and other frozen products utilized 154 million cwt of raw potatoes, up 4 percent. Potatoes used for dehydrating totaled 54.6 million cwt, 29 percent above 2005. Canning use, at 3.00 million cwt, dropped 2 percent. Starch, flour, and other products were made from 1.10 million cwt of potatoes, 31 percent below the previous year.

Shrinkage and loss is estimated at 29.9 million cwt for 2006, up 5 percent from 2005. Potatoes used for livestock feed on farms where grown and home use totaled 1.24 million cwt, 3 percent above the previous season. Growers kept 3.50 million cwt for seed on their own farms, down 3 percent from a year earlier.

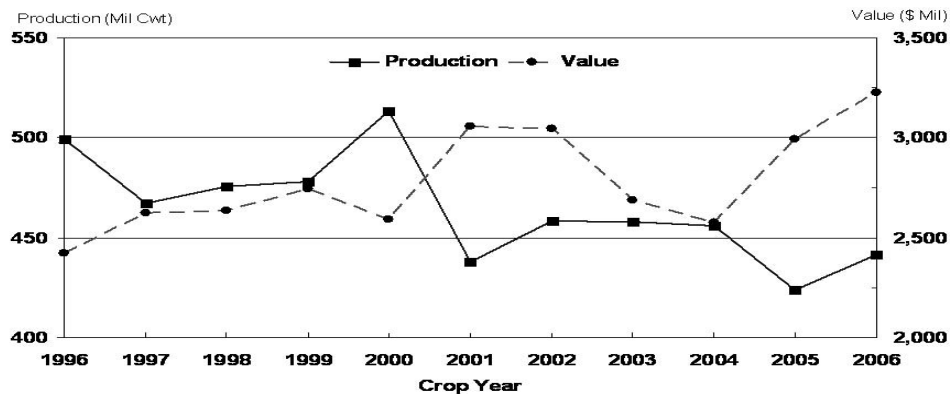
Potatoes: Utilization of Crops, United States, 2003-2006

Utilization Items	Crop Year			
	2003	2004	2005	2006
	<i>1,000 Cwt</i>	<i>1,000 Cwt</i>	<i>1,000 Cwt</i>	<i>1,000 Cwt</i>
Sales				
Table Stock	133,143	130,418	120,372	101,383
Processing				
Chips and Shoestrings	52,790	50,068	50,998	67,034
Dehydrated ¹	48,418	48,541	42,312	54,590
Frozen French Fries	126,515	131,592	123,298	129,469
Other Frozen Products	23,870	23,003	24,747	24,859
Canned Products	3,086	2,843	2,120	2,200
Other Canned Products (Hash, Stews, Soups)	1,168	984	934	795
Starch, Flour, and Other	1,379	1,531	1,582	1,097
Total	257,226	258,562	245,991	280,044
Other Sales				
Livestock Feed	2,005	1,942	1,999	1,660
Seed	24,603	22,915	22,254	23,671
Total	26,608	24,857	24,253	25,331
Total Sales	416,977	413,837	390,616	406,758
Non-Sales				
Seed Used on Farms				
Where Grown	4,000	3,601	3,595	3,503
Household Use and Used for				
Feed on Farms Where Grown	1,543	1,195	1,196	1,235
Shrinkage and Loss ²	35,294	37,408	28,519	29,852
Total Non-Sales	40,837	42,204	33,310	34,590
Total Production	457,814	456,041	423,926	441,348

¹ Dehydrated products except starch and flour.

² Includes potatoes disposed of by the United Fresh Potato Growers of Idaho for 2004.

U. S. Potato Production and Value



**Potatoes: Area Planted, Harvested, Yield, and Production
by Seasonal Group, State, and United States, 2004-2006**

Seasonal Group and State	Area Planted			Area Harvested		
	2004	2005	2006	2004	2005	2006
	<i>1,000 Acres</i>	<i>1,000 Acres</i>	<i>1,000 Acres</i>	<i>1,000 Acres</i>	<i>1,000 Acres</i>	<i>1,000 Acres</i>
Winter						
CA	13.0	14.0	12.0	13.0	14.0	12.0
FL	5.7	6.0	5.7	5.5	5.8	5.5
Total	18.7	20.0	17.7	18.5	19.8	17.5
Spring						
AZ	6.2	4.3	3.9	6.2	4.3	3.9
CA	17.5	15.1	15.3	17.5	15.1	15.3
FL	24.8	23.6	23.1	24.5	23.2	22.6
Hastings	18.2	17.3	17.0	18.0	17.0	16.6
Other FL	6.6	6.3	6.1	6.5	6.2	6.0
NC	17.0	15.5	17.7	13.5	15.0	15.5
TX	11.0	9.5	10.7	10.5	9.1	10.2
Total	76.5	68.0	70.7	72.2	66.7	67.5
	Yield			Production		
	2004	2005	2006	2004	2005	2006
	<i>Cwt</i>	<i>Cwt</i>	<i>Cwt</i>	<i>1,000 Cwt</i>	<i>1,000 Cwt</i>	<i>1,000 Cwt</i>
Winter						
CA	250	250	260	3,250	3,500	3,120
FL	285	240	250	1,568	1,392	1,375
Total	260	247	257	4,818	4,892	4,495
Spring						
AZ	285	275	300	1,767	1,183	1,170
CA	475	405	395	8,313	6,116	6,044
FL	313	281	285	7,678	6,527	6,441
Hastings	320	280	285	5,760	4,760	4,731
Other FL	295	285	285	1,918	1,767	1,710
NC	200	190	210	2,700	2,850	3,255
TX	210	225	280	2,205	2,048	2,856
Total	314	281	293	22,663	18,724	19,766

**Potatoes: Area Planted and Harvested by Seasonal Group,
State, and United States, 2004-2006**

Seasonal Group and State	Area Planted			Area Harvested		
	2004	2005	2006	2004	2005	2006
	<i>1,000 Acres</i>	<i>1,000 Acres</i>	<i>1,000 Acres</i>	<i>1,000 Acres</i>	<i>1,000 Acres</i>	<i>1,000 Acres</i>
Summer						
AL	2.3	1.6	1.7	1.3	1.3	1.6
CA	7.0	6.2	6.3	7.0	6.2	6.3
CO	5.8	5.0	3.7	5.7	4.9	3.6
DE	3.3	3.3	3.0	3.1	3.1	2.1
IL	5.0	5.7	6.5	4.8	5.5	6.3
KS	3.5	5.1	6.0	3.4	5.0	5.7
MD	4.7	3.5	4.0	4.6	3.4	2.9
MO	6.9	6.5	7.8	6.2	6.3	7.6
NJ	2.3	2.1	2.5	2.2	2.1	2.5
NM ¹	1.2			1.0		
TX	10.4	9.4	10.5	9.6	8.7	9.7
VA	6.0	5.0	6.0	5.0	4.9	5.6
Total	58.4	53.4	58.0	53.9	51.4	53.9
Fall						
CA	7.6	7.6	8.6	7.6	7.6	8.6
CO	65.0	58.2	59.9	64.3	58.0	59.7
ID	355.0	325.0	335.0	353.0	323.0	334.0
10 SW Co	25.0	21.0	21.0	25.0	21.0	21.0
Other ID	330.0	304.0	314.0	328.0	302.0	313.0
IN ²	3.4			3.2		
ME	63.5	57.5	58.5	61.5	56.2	58.0
MA	2.6	2.5	3.1	2.5	2.4	3.1
MI	43.0	43.0	43.5	42.0	42.8	43.0
MN	47.0	46.0	51.0	44.0	43.0	48.0
MT	10.7	10.7	10.6	10.6	10.6	10.5
NE	22.0	19.5	19.5	21.6	19.4	19.4
NV	6.7	5.5	6.6	6.7	5.5	6.6
NM ¹	4.0	4.7	5.0	4.0	4.2	5.0
NY	20.0	20.5	20.6	19.2	20.1	19.0
ND	105.0	92.0	100.0	101.0	82.0	98.0
OH	3.7	3.7	3.3	3.6	3.6	3.1
OR	37.0	37.3	35.0	37.0	37.1	35.0
Malheur	5.2	3.8	3.5	5.2	3.8	3.5
Other OR	31.8	33.5	31.5	31.8	33.3	31.5
PA	12.0	11.5	11.0	11.0	11.0	10.5
RI	0.5	0.5	0.5	0.5	0.5	0.5
WA	160.0	154.0	156.0	159.0	154.0	155.0
WI	71.0	68.0	66.0	70.0	68.0	66.0
Total	1,039.7	967.7	993.7	1,022.3	949.0	983.0
US	1,193.3	1,109.1	1,140.1	1,166.9	1,086.9	1,121.9

¹ Summer potatoes combined with fall potatoes in 2005.

² Estimates discontinued in 2005.

**Potatoes: Yield and Production by Seasonal Group,
State, and United States, 2004-2006**

Seasonal Group and State	Yield			Production		
	2004	2005	2006	2004	2005	2006
	<i>Cwt</i>	<i>Cwt</i>	<i>Cwt</i>	<i>1,000 Cwt</i>	<i>1,000 Cwt</i>	<i>1,000 Cwt</i>
Summer						
AL	175	150	150	228	195	240
CA	350	355	335	2,450	2,201	2,111
CO	350	375	360	1,995	1,838	1,296
DE	260	260	240	806	806	504
IL	415	380	395	1,992	2,090	2,489
KS	400	360	320	1,360	1,800	1,824
MD	260	260	320	1,196	884	928
MO	310	340	315	1,922	2,142	2,394
NJ	270	255	240	594	536	600
NM ¹	340			340		
TX	440	465	440	4,224	4,046	4,268
VA	240	210	270	1,200	1,029	1,512
Total	340	342	337	18,307	17,567	18,166
Fall						
CA	480	435	450	3,648	3,306	3,870
CO	370	395	380	23,791	22,910	22,686
ID	374	366	386	131,970	118,288	128,915
10 SW Co	490	470	475	12,250	9,870	9,975
Other ID	365	359	380	119,720	108,418	118,940
IN ²	350			1,120		
ME	310	275	310	19,065	15,455	17,980
MA	320	260	240	800	624	744
MI	325	325	330	13,650	13,910	14,190
MN	430	410	425	18,920	17,630	20,400
MT	335	325	335	3,551	3,445	3,518
NE	430	425	450	9,288	8,245	8,730
NV	430	425	445	2,881	2,338	2,937
NM ¹	430	420	420	1,720	1,764	2,100
NY	270	260	300	5,184	5,226	5,700
ND	265	250	260	26,765	20,500	25,480
OH	300	240	325	1,080	864	1,008
OR	534	594	530	19,775	22,023	18,533
Malheur	470	450	435	2,444	1,710	1,523
Other OR	545	610	540	17,331	20,313	17,010
PA	240	250	260	2,640	2,750	2,730
RI	290	210	260	145	105	130
WA	590	620	580	93,810	95,480	89,900
WI	435	410	445	30,450	27,880	29,370
Total	401	403	406	410,253	382,743	398,921
US	391	390	393	456,041	423,926	441,348

¹ Summer potatoes combined with fall potatoes in 2005.

² Estimates discontinued in 2005.

**Potatoes: Production, Farm Disposition, Price, and Value
by Season, State, and United States, 2005 Crop**

Season and State	Prod	Total Used for Seed	Farm Disposition			Price per Cwt	Value of	
			Where Grown		Sold		Prod	Sales
			Seed, Feed, Home	Shrink and Loss				
	<i>1,000 Cwt</i>	<i>1,000 Cwt</i>	<i>1,000 Cwt</i>	<i>1,000 Cwt</i>	<i>1,000 Cwt</i>	<i>Dollars</i>	<i>1,000 Dollars</i>	<i>1,000 Dollars</i>
Winter								
CA	3,500	420	35	140	3,325	19.10	66,850	63,508
FL	1,392	145		14	1,378	27.20	37,862	37,482
Total	4,892	565	35	154	4,703	21.47	104,712	100,990
Spring								
AZ	1,183	78	2	14	1,167	11.50	13,605	13,421
CA	6,116	459	61	550	5,505	13.00	79,508	71,565
FL	6,527	574		65	6,462	11.70	76,485	75,722
Hastings	4,760	418		47	4,713	10.50	49,980	49,487
Other FL	1,767	156		18	1,749	15.00	26,505	26,235
NC	2,850	248	25	111	2,714	7.70	21,945	20,898
TX	2,048	171	26	37	1,985	9.95	20,378	19,751
Total	18,724	1,530	114	777	17,833	11.29	211,921	201,357
Summer								
AL	195	26	3	6	186	8.55	1,667	1,590
CA	2,201	202	11	40	2,150	14.40	31,694	30,960
CO	1,838	86	4	134	1,700	8.45	15,531	14,365
DE	806	45	3	31	772	8.65	6,972	6,678
IL	2,090	143	36	42	2,012	6.10	12,749	12,273
KS	1,800	144		72	1,728	7.70	13,860	13,306
MD	884	60	24	25	835	8.30	7,337	6,931
MO	2,142	156	1	21	2,120	5.75	12,317	12,190
NJ	536	45	3	16	517	8.05	4,315	4,162
TX	4,046	158	10	50	3,986	13.10	53,003	52,217
VA	1,029	84	2	36	991	10.50	10,805	10,406
Total	17,567	1,149	97	473	16,997	9.71	170,250	165,078

**Potatoes: Production, Farm Disposition, Price, and Value
by Season, State, and United States, 2005 Crop**

Season and State	Prod	Total Used for Seed	Farm Disposition			Price per Cwt	Value of	
			Where Grown		Sold		Prod	Sales
			Seed, Feed, Home	Shrink and Loss				
	<i>1,000 Cwt</i>	<i>1,000 Cwt</i>	<i>1,000 Cwt</i>	<i>1,000 Cwt</i>	<i>1,000 Cwt</i>	<i>Dollars</i>	<i>1,000 Dollars</i>	<i>1,000 Dollars</i>
Fall								
CA	3,306	249		331	2,975	7.35	24,299	21,866
CO	22,910	1,498	1,200	1,650	20,060	8.65	198,172	173,519
ID	118,288	7,370	1,230	7,800	109,258	5.70	674,242	622,771
ME	15,455	1,264	242	1,183	14,030	8.25	127,504	115,748
MA	624	76	4	8	612	8.80	5,491	5,386
MI	13,910	1,044	182	1,728	12,000	7.90	109,889	94,800
MN	17,630	1,040	140	1,600	15,890	6.45	113,714	102,491
MT	3,445	244	156	210	3,079	9.15	31,522	28,173
NE	8,245	515	231	834	7,180	8.45	69,670	60,671
NV	2,338	132		285	2,053	5.50	12,859	11,292
NM	1,764	115	14	150	1,600	6.80	11,995	10,880
NY	5,226	453	100	491	4,635	12.20	63,757	56,547
ND	20,500	1,900	240	1,810	18,450	6.80	139,400	125,460
OH	864	65	1	11	852	8.65	7,474	7,370
OR	22,023	837	255	1,392	20,376	5.85	128,835	119,200
PA	2,750	249	10	250	2,490	11.40	31,350	28,386
RI	105	12		2	103	8.50	893	876
WA	95,480	3,900	240	6,000	89,240	5.60	534,688	499,744
WI	27,880	1,452	300	1,380	26,200	7.85	218,858	205,670
Total	382,743	22,415	4,545	27,115	351,083	6.53	2,504,612	2,290,850
US	423,926	25,659	4,791	28,519	390,616	7.06	2,991,495	2,758,275

**Potatoes: Production, Farm Disposition, Price, and Value
by Season, State, and United States, 2006 Crop**

Season and State	Prod	Total Used for Seed	Farm Disposition			Price per Cwt	Value of	
			Where Grown		Sold		Prod	Sales
			Seed, Feed, Home	Shrink and Loss				
	<i>1,000 Cwt</i>	<i>1,000 Cwt</i>	<i>1,000 Cwt</i>	<i>1,000 Cwt</i>	<i>1,000 Cwt</i>	<i>Dollars</i>	<i>1,000 Dollars</i>	<i>1,000 Dollars</i>
Winter								
CA	3,120	403	30	95	2,995	18.00	56,160	53,910
FL ¹	1,375			8	1,367	40.00	55,000	54,680
Total	4,495	403	30	103	4,362	24.89	111,160	108,590
Spring								
AZ	1,170	80	2	12	1,156	13.40	15,678	15,490
CA	6,044	403	60	484	5,500	12.00	72,528	66,000
FL ¹	6,441	731		64	6,377	14.20	91,462	90,554
Hastings	4,731	424		47	4,684	14.20	67,180	66,513
Other FL ¹	1,710	307		17	1,693	14.20	24,282	24,041
NC	3,255	224	22	98	3,135	10.00	32,550	31,350
TX	2,856	155	32	54	2,770	10.80	30,845	29,916
Total	19,766	1,593	116	712	18,938	12.32	243,063	233,310
Summer								
AL	240	23	3	9	228	15.00	3,600	3,420
CA	2,111	217	21	42	2,048	15.30	32,298	31,334
CO	1,296	78	4	105	1,187	7.85	10,174	9,318
DE	504	50	3	20	481	9.25	4,662	4,449
IL	2,489	132	38	40	2,411	6.50	16,179	15,672
KS	1,824	108		73	1,751	10.60	19,334	18,561
MD	928	60	25	26	877	10.10	9,373	8,858
MO	2,394	140	1	25	2,368	6.15	14,723	14,563
NJ	600	44	3	18	579	8.70	5,220	5,037
TX	4,268	168	10	50	4,208	14.70	62,740	61,858
VA	1,512	84	2	53	1,457	14.70	22,226	21,418
Total	18,166	1,104	110	461	17,595	11.05	200,529	194,488

¹ Winter potatoes combined with spring potatoes in 2007. Spring potato "Total Used for Seed" includes winter and spring potatoes.

**Potatoes: Production, Farm Disposition, Price, and Value
by Season, State, and United States, 2006 Crop**

Season and State	Prod	Total Used for Seed	Farm Disposition			Price per Cwt	Value of	
			Where Grown		Sold		Prod	Sales
			Seed, Feed, Home	Shrink and Loss				
	<i>1,000 Cwt</i>	<i>1,000 Cwt</i>	<i>1,000 Cwt</i>	<i>1,000 Cwt</i>	<i>1,000 Cwt</i>	<i>Dollars</i>	<i>1,000 Dollars</i>	<i>1,000 Dollars</i>
Fall								
CA	3,870	210		480	3,390	6.75	26,123	22,883
CO	22,686	1,480	1,140	2,056	19,490	7.95	180,354	154,946
ID	128,915	7,875	1,188	8,200	119,527	5.90	760,599	705,209
ME	17,980	1,236	228	1,482	16,270	7.80	140,244	126,906
MA	744	59	5	5	734	10.10	7,514	7,413
MI	14,190	961	180	1,800	12,210	8.35	118,487	101,954
MN	20,400	1,190	250	1,700	18,450	6.15	125,460	113,468
MT	3,518	270	180	130	3,208	9.00	31,662	28,872
NE	8,730	521	200	775	7,755	7.40	64,602	57,387
NV	2,937	150		350	2,587	6.10	17,916	15,781
NM	2,100	127	20	200	1,880	6.50	13,650	12,220
NY	5,700	460	100	480	5,120	12.00	68,400	61,440
ND	25,480	1,853	240	2,290	22,950	6.55	166,894	150,323
OH	1,008	51	1	21	986	8.90	8,971	8,775
OR	18,533	880	260	1,020	17,253	6.45	119,538	111,282
PA	2,730	280	5	160	2,565	10.40	28,392	26,676
RI	130	14		2	128	10.40	1,352	1,331
WA	89,900	4,290	240	5,500	84,160	6.25	561,875	526,000
WI	29,370	1,430	245	1,925	27,200	7.80	229,086	212,160
Total	398,921	23,337	4,482	28,576	365,863	6.68	2,671,119	2,445,026
US	441,348	26,437	4,738	29,852	406,758	7.33	3,225,871	2,981,414

**Potatoes: Area Planted and Harvested by State
and United States, 2004-2006**

State	Area Planted			Area Harvested		
	2004	2005	2006	2004	2005	2006
	<i>1,000 Acres</i>	<i>1,000 Acres</i>	<i>1,000 Acres</i>	<i>1,000 Acres</i>	<i>1,000 Acres</i>	<i>1,000 Acres</i>
AL	2.3	1.6	1.7	1.3	1.3	1.6
AZ	6.2	4.3	3.9	6.2	4.3	3.9
CA	45.1	42.9	42.2	45.1	42.9	42.2
CO	70.8	63.2	63.6	70.0	62.9	63.3
DE	3.3	3.3	3.0	3.1	3.1	2.1
FL	30.5	29.6	28.8	30.0	29.0	28.1
ID	355.0	325.0	335.0	353.0	323.0	334.0
IL	5.0	5.7	6.5	4.8	5.5	6.3
IN ¹	3.4			3.2		
KS	3.5	5.1	6.0	3.4	5.0	5.7
ME	63.5	57.5	58.5	61.5	56.2	58.0
MD	4.7	3.5	4.0	4.6	3.4	2.9
MA	2.6	2.5	3.1	2.5	2.4	3.1
MI	43.0	43.0	43.5	42.0	42.8	43.0
MN	47.0	46.0	51.0	44.0	43.0	48.0
MO	6.9	6.5	7.8	6.2	6.3	7.6
MT	10.7	10.7	10.6	10.6	10.6	10.5
NE	22.0	19.5	19.5	21.6	19.4	19.4
NV	6.7	5.5	6.6	6.7	5.5	6.6
NJ	2.3	2.1	2.5	2.2	2.1	2.5
NM	5.2	4.7	5.0	5.0	4.2	5.0
NY	20.0	20.5	20.6	19.2	20.1	19.0
NC	17.0	15.5	17.7	13.5	15.0	15.5
ND	105.0	92.0	100.0	101.0	82.0	98.0
OH	3.7	3.7	3.3	3.6	3.6	3.1
OR	37.0	37.3	35.0	37.0	37.1	35.0
PA	12.0	11.5	11.0	11.0	11.0	10.5
RI	0.5	0.5	0.5	0.5	0.5	0.5
TX	21.4	18.9	21.2	20.1	17.8	19.9
VA	6.0	5.0	6.0	5.0	4.9	5.6
WA	160.0	154.0	156.0	159.0	154.0	155.0
WI	71.0	68.0	66.0	70.0	68.0	66.0
US	1,193.3	1,109.1	1,140.1	1,166.9	1,086.9	1,121.9

¹ Estimates discontinued in 2005.

**Potatoes: Yield and Production by State
and United States, 2004-2006**

State	Yield ¹			Production		
	2004	2005	2006	2004	2005	2006
	<i>Cwt</i>	<i>Cwt</i>	<i>Cwt</i>	<i>1,000 Cwt</i>	<i>1,000 Cwt</i>	<i>1,000 Cwt</i>
AL	175	150	150	228	195	240
AZ	285	275	300	1,767	1,183	1,170
CA	392	353	359	17,661	15,123	15,145
CO	368	393	379	25,786	24,748	23,982
DE	260	260	240	806	806	504
FL	308	273	278	9,246	7,919	7,816
ID	374	366	386	131,970	118,288	128,915
IL	415	380	395	1,992	2,090	2,489
IN ²	350			1,120		
KS	400	360	320	1,360	1,800	1,824
ME	310	275	310	19,065	15,455	17,980
MD	260	260	320	1,196	884	928
MA	320	260	240	800	624	744
MI	325	325	330	13,650	13,910	14,190
MN	430	410	425	18,920	17,630	20,400
MO	310	340	315	1,922	2,142	2,394
MT	335	325	335	3,551	3,445	3,518
NE	430	425	450	9,288	8,245	8,730
NV	430	425	445	2,881	2,338	2,937
NJ	270	255	240	594	536	600
NM	412	420	420	2,060	1,764	2,100
NY	270	260	300	5,184	5,226	5,700
NC	200	190	210	2,700	2,850	3,255
ND	265	250	260	26,765	20,500	25,480
OH	300	240	325	1,080	864	1,008
OR	534	594	530	19,775	22,023	18,533
PA	240	250	260	2,640	2,750	2,730
RI	290	210	260	145	105	130
TX	320	342	358	6,429	6,094	7,124
VA	240	210	270	1,200	1,029	1,512
WA	590	620	580	93,810	95,480	89,900
WI	435	410	445	30,450	27,880	29,370
US	391	390	393	456,041	423,926	441,348

¹ Derived.

² Estimates discontinued in 2005.

**Potatoes: Production, Farm Disposition, Price, and Value
by State, and United States, 2005 Crop**

State	Prod	Total Used for Seed	Farm Disposition			Price per Cwt	Value of	
			Where Grown		Sold		Prod	Sales
			Seed, Feed, Home	Shrink and Loss				
	<i>1,000 Cwt</i>	<i>1,000 Cwt</i>	<i>1,000 Cwt</i>	<i>1,000 Cwt</i>	<i>1,000 Cwt</i>	<i>Dollars</i>	<i>1,000 Dollars</i>	<i>1,000 Dollars</i>
AL	195	26	3	6	186	8.55	1,667	1,590
AZ	1,183	78	2	14	1,167	11.50	13,605	13,421
CA	15,123	1,330	107	1,061	13,955	13.50	202,351	187,899
CO	24,748	1,584	1,204	1,784	21,760	8.65	213,703	187,884
DE	806	45	3	31	772	8.65	6,972	6,678
FL	7,919	719		79	7,840	14.40	114,347	113,204
ID	118,288	7,370	1,230	7,800	109,258	5.70	674,242	622,771
IL	2,090	143	36	42	2,012	6.10	12,749	12,273
KS	1,800	144		72	1,728	7.70	13,860	13,306
ME	15,455	1,264	242	1,183	14,030	8.25	127,504	115,748
MD	884	60	24	25	835	8.30	7,337	6,931
MA	624	76	4	8	612	8.80	5,491	5,386
MI	13,910	1,044	182	1,728	12,000	7.90	109,889	94,800
MN	17,630	1,040	140	1,600	15,890	6.45	113,714	102,491
MO	2,142	156	1	21	2,120	5.75	12,317	12,190
MT	3,445	244	156	210	3,079	9.15	31,522	28,173
NE	8,245	515	231	834	7,180	8.45	69,670	60,671
NV	2,338	132		285	2,053	5.50	12,859	11,292
NJ	536	45	3	16	517	8.05	4,315	4,162
NM	1,764	115	14	150	1,600	6.80	11,995	10,880
NY	5,226	453	100	491	4,635	12.20	63,757	56,547
NC	2,850	248	25	111	2,714	7.70	21,945	20,898
ND	20,500	1,900	240	1,810	18,450	6.80	139,400	125,460
OH	864	65	1	11	852	8.65	7,474	7,370
OR	22,023	837	255	1,392	20,376	5.85	128,835	119,200
PA	2,750	249	10	250	2,490	11.40	31,350	28,386
RI	105	12		2	103	8.50	893	876
TX	6,094	329	36	87	5,971	12.10	73,381	71,968
VA	1,029	84	2	36	991	10.50	10,805	10,406
WA	95,480	3,900	240	6,000	89,240	5.60	534,688	499,744
WI	27,880	1,452	300	1,380	26,200	7.85	218,858	205,670
US	423,926	25,659	4,791	28,519	390,616	7.06	2,991,495	2,758,275

**Potatoes: Production, Farm Disposition, Price, and Value
by State, and United States, 2006 Crop**

State	Prod	Total Used for Seed	Farm Disposition			Price per Cwt	Value of	
			Where Grown		Sold		Prod	Sales
			Seed, Feed, Home	Shrink and Loss				
	<i>1,000 Cwt</i>	<i>1,000 Cwt</i>	<i>1,000 Cwt</i>	<i>1,000 Cwt</i>	<i>1,000 Cwt</i>	<i>Dollars</i>	<i>1,000 Dollars</i>	<i>1,000 Dollars</i>
AL	240	23	3	9	228	15.00	3,600	3,420
AZ	1,170	80	2	12	1,156	13.40	15,678	15,490
CA	15,145	1,233	111	1,101	13,933	12.50	187,109	174,127
CO	23,982	1,558	1,144	2,161	20,677	7.95	190,528	164,264
DE	504	50	3	20	481	9.25	4,662	4,449
FL	7,816	731		72	7,744	18.80	146,462	145,234
ID	128,915	7,875	1,188	8,200	119,527	5.90	760,599	705,209
IL	2,489	132	38	40	2,411	6.50	16,179	15,672
KS	1,824	108		73	1,751	10.60	19,334	18,561
ME	17,980	1,236	228	1,482	16,270	7.80	140,244	126,906
MD	928	60	25	26	877	10.10	9,373	8,858
MA	744	59	5	5	734	10.10	7,514	7,413
MI	14,190	961	180	1,800	12,210	8.35	118,487	101,954
MN	20,400	1,190	250	1,700	18,450	6.15	125,460	113,468
MO	2,394	140	1	25	2,368	6.15	14,723	14,563
MT	3,518	270	180	130	3,208	9.00	31,662	28,872
NE	8,730	521	200	775	7,755	7.40	64,602	57,387
NV	2,937	150		350	2,587	6.10	17,916	15,781
NJ	600	44	3	18	579	8.70	5,220	5,037
NM	2,100	127	20	200	1,880	6.50	13,650	12,220
NY	5,700	460	100	480	5,120	12.00	68,400	61,440
NC	3,255	224	22	98	3,135	10.00	32,550	31,350
ND	25,480	1,853	240	2,290	22,950	6.55	166,894	150,323
OH	1,008	51	1	21	986	8.90	8,971	8,775
OR	18,533	880	260	1,020	17,253	6.45	119,538	111,282
PA	2,730	280	5	160	2,565	10.40	28,392	26,676
RI	130	14		2	128	10.40	1,352	1,331
TX	7,124	323	42	104	6,978	13.20	93,585	91,774
VA	1,512	84	2	53	1,457	14.70	22,226	21,418
WA	89,900	4,290	240	5,500	84,160	6.25	561,875	526,000
WI	29,370	1,430	245	1,925	27,200	7.80	229,086	212,160
US	441,348	26,437	4,738	29,852	406,758	7.33	3,225,871	2,981,414

Potatoes: Quantity Used for Processing, Nine States, 2004-2006 ¹

State and Crop Year	Dec 1	Jan 1	Feb 1	Mar 1	Apr 1	May 1	Jun 1	Season
	<i>1,000 Cwt</i>	<i>1,000 Cwt</i>	<i>1,000 Cwt</i>	<i>1,000 Cwt</i>	<i>1,000 Cwt</i>	<i>1,000 Cwt</i>	<i>1,000 Cwt</i>	<i>1,000 Cwt</i>
ID & OR-Mal								
2004	24,360	30,840	36,820	44,610	51,000	58,090	65,800	84,600
2005	22,840	29,300	35,970	43,300	50,820	57,830	65,030	77,360
2006	27,090	34,070	41,350	48,940	56,650	63,680	71,220	85,630
ME ²								
2004	1,540	1,970	2,600	3,135	3,700	4,340	4,910	6,590
2005	1,365	1,880	2,485	3,090	3,800	4,450	5,130	6,825
2006	1,755	2,360	2,910	3,465	4,185	4,810	5,470	7,560
WA & OR-Oth								
2004	32,305	38,130	43,570	50,730	57,140	63,855	71,355	78,680
2005	30,310	35,895	40,545	48,290	55,320	61,855	69,360	78,550
2006	30,980	37,060	42,190	49,930	56,690	63,170	70,410	77,355
Other Sts ³								
2004	12,490	15,000	17,965	20,910	24,150	27,480	30,945	41,175
2005	11,055	14,070	17,005	19,895	22,520	25,270	27,740	35,535
2006	14,270	17,695	21,290	24,545	28,040	31,370	34,830	43,315
Total								
2004	70,695	85,940	100,955	119,385	135,990	153,765	173,010	211,045
2005	65,570	81,145	96,005	114,575	132,460	149,405	167,260	198,270
2006	74,095	91,185	107,740	126,880	145,565	163,030	181,930	213,860
Dehydrated ⁴								
2004	14,525	18,540	21,875	25,970	30,020	33,685	38,505	47,805
2005	11,920	15,655	19,225	22,765	26,605	30,065	34,130	41,625
2006	14,590	19,250	23,635	27,885	32,210	36,480	40,915	49,370

¹ Total quantity received and used for processing regardless of the State in which the potatoes were produced. Amount excludes quantities used for potato chips in ME and WI.

² Includes Maine grown potatoes only.

³ CO, MN, NV, ND, and WI.

⁴ Dehydrated products except starch and flour. Included in above totals. Includes CO, ID, NV, ND, OR, WA, and WI.

**Potatoes: Number of Chip Plants, Quantity Used for Chipping, by Area
and Quantity Used for Shoestrings, United States, 2005-2006**

Area	2005		2006	
	Plants	Quantity	Plants	Quantity
	<i>Number</i>	<i>1,000 Cwt</i>	<i>Number</i>	<i>1,000 Cwt</i>
New England CT, ME, MA, NH, RI, VT	4	2,980	3	4,116
Eastern ¹ DE, DC, MD, NJ, NY, PA, VA	20	10,645	19	12,144
North Central MI, OH, WV	15	4,290	15	6,004
Mid-Central KS, MO, NE	3	1,726	3	2,497
Midwest IL, IN, IA, MN, ND, SD, WI	13	7,879	14	10,514
Southeast AL, FL, GA, KY, LA MS, NC, SC, TN	11	8,149	12	11,707
Southwest AR, OK, TX	7	5,986	8	7,872
Rocky Mountains CO, ID, MT, NM, UT, WY	3	1,557	3	2,156
West Coast AK, AZ, CA, HI, NV, OR, WA	15	7,786	15	10,024
Total ¹	91	50,998	92	67,034
Shoestrings ²				
Total Used for Chips and Shoestrings		50,998		67,034

¹ Includes shoestrings to avoid disclosure of individual firms.

² Not published to avoid disclosure of individual firms.

**Potatoes: Stocks Held by Growers, Local Dealers, and Processors,
13 Fall States, 2005-2006¹**

Crop Year and State	Current Year	Following Year					
	Dec 1	Jan 1	Feb 1	Mar 1	Apr 1	May 1	Jun 1
	<i>1,000 Cwt</i>	<i>1,000 Cwt</i>	<i>1,000 Cwt</i>	<i>1,000 Cwt</i>	<i>1,000 Cwt</i>	<i>1,000 Cwt</i>	<i>1,000 Cwt</i>
2005							
CA	1,600	1,300	1,100	900	700	400	260
CO	17,200	15,000	12,900	11,200	8,800	5,700	3,300
ID	85,000	75,500	66,000	56,000	43,500	31,000	18,500
ME	12,500	11,200	9,700	8,400	6,500	4,300	2,500
MI	7,900	6,200	4,500	3,100	1,700	500	*
MN	13,500	11,100	9,000	7,100	4,500	2,700	2,000
MT	3,400	3,300	3,300	3,200	1,900	*	*
NE	5,600	4,700	3,900	3,300	2,200	1,200	*
NY	2,900	2,200	1,700	1,200	500	*	*
ND	14,000	11,500	9,400	7,200	5,300	3,200	1,300
OR	19,000	16,500	14,500	11,500	8,500	5,000	2,300
WA	52,500	46,500	40,500	32,500	25,000	17,500	9,400
WI	18,700	15,500	12,600	9,900	6,600	3,900	1,300
Other Sts						500	700
Total 13 Sts	253,800	220,500	189,100	155,500	115,700	75,900	41,560
2006 ²							
CA	1,800	1,500	1,300	1,200	800	450	290
CO	17,200	15,200	13,100	11,300	9,000	5,800	3,700
ID	90,000	80,000	70,000	59,500	46,500	33,000	21,000
ME	14,400	12,800	11,300	9,800	7,700	5,300	3,000
MI	8,100	6,300	4,600	3,300	1,800	700	*
MN	13,300	11,600	10,000	8,300	6,100	4,100	2,000
MT	3,300	3,300	3,200	3,100	2,300	*	*
NE	5,800	4,900	4,000	3,400	2,400	1,400	700
NY	3,000	2,200	1,400	1,000	500	*	*
ND	17,300	15,000	12,000	9,900	7,900	4,800	2,100
OR	16,000	13,900	11,700	9,700	7,600	4,800	2,300
WA	49,000	42,500	36,500	28,500	21,000	14,000	7,500
WI	20,100	16,900	13,500	10,700	7,400	4,000	1,700
Other Sts						700	170
Total 13 Sts	259,300	226,100	192,600	159,700	121,000	79,050	44,460
Klamath Basin ³	4,000	3,400	2,600	2,200	1,400	600	(⁴)

* Combined into "Other Sts" to avoid disclosure of individual operations.

¹ Stocks are defined as the quantity (whether sold or not) remaining in storage for all purposes and uses, including seed potatoes that are not yet moved, and shrinkage, waste, and other losses that occur after the date of each estimate.

² Revised.

³ Estimates began in 2006. Includes potato stocks in CA and Klamath Co. OR.

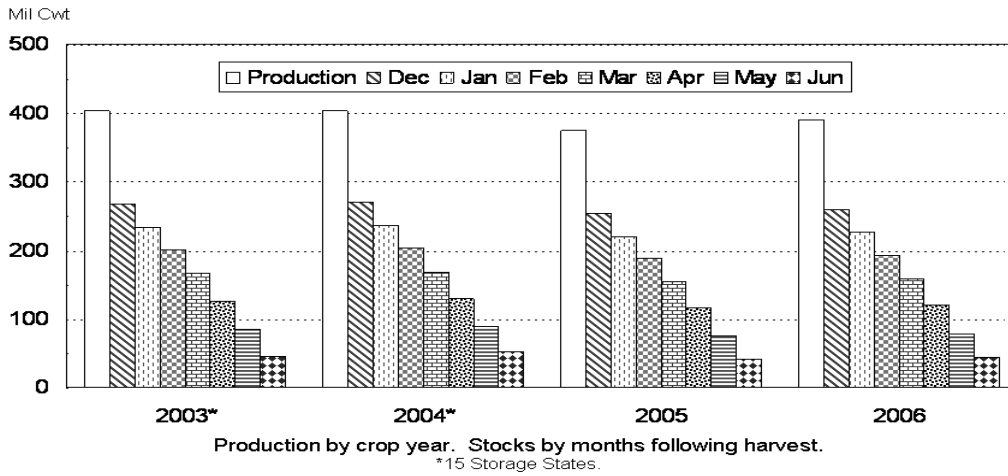
⁴ Not published to avoid disclosure of individual operations.

Potatoes: Shrinkage and Loss, 13 Fall Storage States, 2004-2006

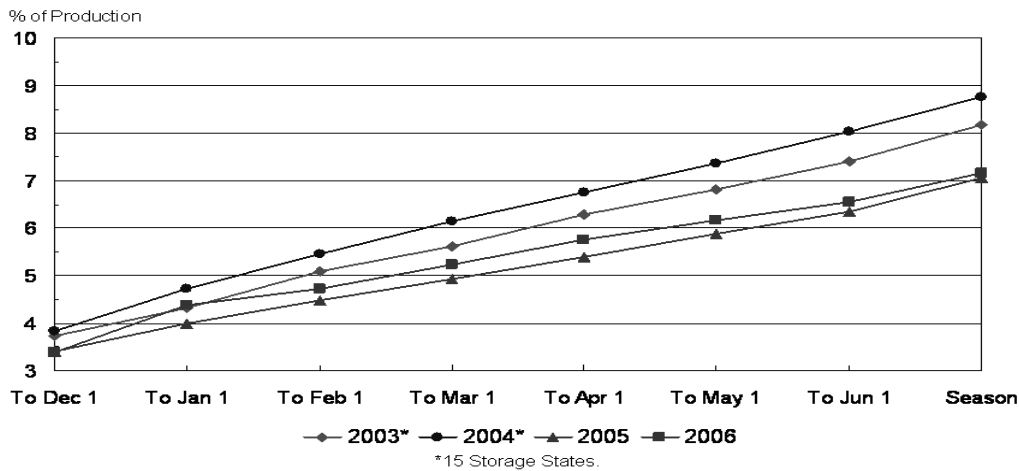
Crop Year	To Dec 1	To Jan 1	To Feb 1	To Mar 1	To Apr 1	To May 1	Total Jun 1	Season
	<i>Million Cwt</i>	<i>Million Cwt</i>	<i>Million Cwt</i>	<i>Million Cwt</i>	<i>Million Cwt</i>	<i>Million Cwt</i>	<i>Million Cwt</i>	<i>Million Cwt</i>
2004 ¹	15.5	19.1	22.0	24.8	27.3	29.7	32.5	35.4
2005	12.7	15.0	16.8	18.4	20.2	22.0	23.7	26.4
2006	13.2	16.1	18.4	20.4	22.3	24.0	25.5	27.8

¹ 15 storage States.

Fall Potatoes: Production and Stocks 13 Storage States



Fall Potatoes: Shrink and Loss 13 Storage States



**Fall Potatoes: Stocks by Type as Percent of Total Stocks,
10 Selected States, December 1 - February 1, 2005-2007**

State	December 1							
	Potato Types							
	Reds		Round Whites		Long Whites		Russets	
	2005	2006	2005	2006	2005	2006	2005	2006
	<i>Percent</i>	<i>Percent</i>	<i>Percent</i>	<i>Percent</i>	<i>Percent</i>	<i>Percent</i>	<i>Percent</i>	<i>Percent</i>
CO	4	3	11	13			85	84
ID	3	2			2	2	95	96
ME	2	2	42	38	3		53	60
MI	1	1	87	87			12	12
MN	7	12	6	4		2	87	82
NY	5	5	90	90			5	5
ND	13	15	18	17	4	2	65	66
OR	1	1	1	2	2	2	96	95
WA	1	2	1	1	5	5	93	92
WI	4	4	38	14			58	82
10 St Avg	3	4	12	10	2	2	83	84
	January 1							
	Potato Types							
	Reds		Round Whites		Long Whites		Russets	
	2006	2007	2006	2007	2006	2007	2006	2007
	<i>Percent</i>	<i>Percent</i>	<i>Percent</i>	<i>Percent</i>	<i>Percent</i>	<i>Percent</i>	<i>Percent</i>	<i>Percent</i>
CO	4	3	11	13			85	84
ID	2	2			2	2	96	96
ME	1	2	41	39	2	1	56	58
MI			90	90			10	10
MN	8	11	5	4		2	87	83
NY	5	5	90	90			5	5
ND	11	15	16	15	2	2	71	68
OR	1	1	1	2	2	2	96	95
WA	1	2			3	3	96	95
WI	2	3	29	33			69	64
10 St Avg	2	3	10	11	2	2	86	84
	February 1							
	Potato Types							
	Reds		Round Whites		Long Whites		Russets	
	2006	2007	2006	2007	2006	2007	2006	2007
	<i>Percent</i>	<i>Percent</i>	<i>Percent</i>	<i>Percent</i>	<i>Percent</i>	<i>Percent</i>	<i>Percent</i>	<i>Percent</i>
CO	4	3	11	13			85	84
ID	2	2			2	2	96	96
ME	1	2	42	40	1	1	56	57
MI			90	90			10	10
MN	8	11	5	4		2	87	83
NY	5	5	90	90			5	5
ND	9	13	14	15	2	2	75	70
OR	1	1	1	2	2	2	96	95
WA	1	1			2	2	97	97
WI	1	1	23	30			76	69
10 St Avg	2	3	9	10	2	1	87	86

**Fall Potatoes: Percent of Acreage Planted by Type of Potatoes,
11 Major States, 2005-2006^{1 2}**

State	Potato Types					
	Reds		Whites		Russets	
	2005	2006	2005	2006	2005	2006
	<i>Percent</i>	<i>Percent</i>	<i>Percent</i>	<i>Percent</i>	<i>Percent</i>	<i>Percent</i>
CO	4	3	11	13	85	84
ID	2	2	3	4	95	94
ME	3	3	50	51	47	46
MI	2	2	83	83	15	15
MN	25	25	9	9	66	66
NY	5	5	90	90	5	5
ND	26	22	32	31	42	47
OR	2	4	14	15	84	81
PA	6	5	94	95		
WA	3	5	10	9	87	86
WI	11	12	32	31	57	57
Total	7	7	20	20	73	73

¹ Predominant type shown may include small portion of other type(s) constituting less than 1 percent of State's total. Yellow flesh potatoes are reported under white types. Blue types are reported under red types.

² Revised.

**Fall Potatoes: Acres Planted for Certified Seed Potatoes,
by State and Total, 2005-2006¹**

State	2005 Crop			2006 Crop		
	Entered for Certification	Certified	Percent Certified	Entered for Certification	Certified	Percent Certified
	<i>Acres</i>	<i>Acres</i>		<i>Acres</i>	<i>Acres</i>	
AK	205	195	95	331	331	100
CA	525	446	85	605	597	99
CO	15,289	12,813	84	14,400	13,249	92
ID	31,626	30,969	98	31,863	31,863	100
ME	11,599	11,466	99	11,483	10,979	96
MI	2,300	2,167	94	2,526	2,526	100
MN	9,683	9,094	94	9,246	8,718	94
MT	9,900	9,675	98	9,572	9,565	100
NE	6,007	5,985	100	5,707	5,704	100
NY	807	806	100	867	853	98
ND	12,849	12,610	98	16,430	15,866	97
OR	2,251	2,251	100	2,716	2,564	94
PA	260	259	100	250	250	100
WA	2,360	2,360	100	2,422	2,412	100
WI	8,489	8,173	96	8,625	8,624	100
Total	114,150	109,269	96	117,043	114,101	97

¹ Data supplied by State seed certification officials.

**Fall Potatoes: Farm Marketings, Percent of Sales,
Selected States, 2004-2006 Marketing Years**

State	Crop Year	Jul	Aug	Sep	Oct	Nov	Dec	Jan	Feb	Mar	Apr	May	Jun	Jul
		<i>Percent</i>	<i>Percent</i>	<i>Percent</i>	<i>Percent</i>	<i>Percent</i>	<i>Percent</i>	<i>Percent</i>	<i>Percent</i>	<i>Percent</i>	<i>Percent</i>	<i>Percent</i>	<i>Percent</i>	<i>Percent</i>
CA	2004				8	9	21	13	8	14	12	7	8	
	2005				4	14	22	10	11	12	12	8	7	
	2006				9	15	11	15	10	11	12	9	5	3
CO	2004			5	7	9	10	10	8	12	10	11	11	7
	2005			5	8	10	10	10	8	11	10	12	10	6
	2006			6	7	9	9	10	9	10	11	11	11	7
ID	2004		6	9	10	11	7	6	6	9	10	9	10	7
	2005		2	11	13	8	7	8	7	11	10	10	6	7
	2006		3	11	12	8	7	8	8	10	10	9	7	7
ME	2004		1	9	6	7	10	10	10	11	15	10	7	4
	2005			5	11	8	9	10	9	12	15	10	6	5
	2006			8	7	8	9	9	8	13	13	12	7	6
MI	2004	1	10	11	11	12	12	11	8	10	9	5		
	2005	1	8	11	13	12	12	12	10	10	8	3		
	2006	1	9	12	13	12	12	12	7	11	7	4		
MN	2004		9	8	8	6	6	7	8	13	7	9	10	9
	2005		7	6	4	7	15	12	12	14	9	3	6	5
	2006	5	8	7	7	7	7	8	9	11	10	10	11	
NY	2004		4	16	19	16	13	10	9	8	5			
	2005		2	14	14	12	13	10	12	14	7	2		
	2006		4	15	14	12	14	16	7	10	4	4		
ND	2004		1	20	9	6	6	8	7	11	11	7	8	6
	2005		2	25	13	5	9	9	9	8	10	7	2	1
	2006		3	27	11	6	6	11	5	7	10	9	4	1
OR	2004		12	11	16	8	6	4	9	10	9	8	4	3
	2005		17	10	13	5	7	5	8	9	10	8	4	4
	2006		12	10	13	5	7	7	7	10	10	8	7	4
PA ¹	2004	1	18	16	15	8	15	8	6	5	6	2		
	2005													
	2006													
WA	2004		18	14	21	6	5	5	7	6	6	6	5	1
	2005		14	13	23	7	6	4	6	7	7	7	5	1
	2006		15	11	25	7	6	5	7	6	6	6	5	1
WI	2004		6	14	12	12	9	9	9	11	10	6	2	
	2005	1	6	16	11	10	10	9	9	10	8	8	2	
	2006	1	6	15	10	10	10	9	9	11	10	6	3	
US	2004		9	11	13	9	7	7	7	9	9	8	7	4
	2005		7	12	14	8	8	7	8	10	9	8	5	4
	2006		7	12	14	8	8	7	8	9	9	8	6	4

¹ Farm marketing estimates discontinued in 2005.

**All Potatoes: Farm Marketings, Percent of Sales,
United States, 1997-2006**

Month	Marketing Year									
	1997	1998	1999	2000	2001	2002	2003	2004	2005	2006
	<i>Percent</i>	<i>Percent</i>	<i>Percent</i>	<i>Percent</i>	<i>Percent</i>	<i>Percent</i>	<i>Percent</i>	<i>Percent</i>	<i>Percent</i>	<i>Percent</i>
Nov	0.1				0.1	0.1	0.1			0.1
Dec	0.1	0.1		0.2	0.1	0.1	0.1	0.1	0.1	0.1
Jan	0.1	0.1	0.2	0.1	0.2	0.2	0.1	0.2	0.2	0.3
Feb	0.2	0.1	0.2	0.2	0.3	0.3	0.2	0.3	0.3	0.1
Mar	0.2	0.3	0.4	0.3	0.2	0.3	0.3	0.3	0.5	0.4
Apr	0.8	0.4	0.8	0.7	0.8	0.5	0.4	0.7	0.7	0.7
May	1.9	1.8	1.9	1.5	2.0	2.0	1.8	1.9	1.4	1.3
Jun	2.1	2.2	2.5	2.1	2.2	2.1	2.9	2.7	2.2	2.6
Jul	2.2	1.9	2.1	2.2	1.8	2.0	2.1	1.8	1.9	2.0
Aug	7.1	8.1	7.3	7.9	6.1	7.9	7.3	8.6	6.9	6.9
Sep	12.8	10.6	11.3	10.7	11.4	9.6	9.8	10.8	11.0	11.0
Oct	16.5	17.6	16.2	13.5	14.6	12.3	12.7	11.8	13.4	13.1
Nov	8.0	7.4	7.0	7.8	8.1	9.1	8.7	8.1	7.2	7.3
Dec	6.8	6.3	6.9	5.8	6.7	6.6	7.3	6.6	7.5	6.8
Jan	6.8	6.7	6.3	6.7	6.8	6.9	6.5	6.2	6.9	7.3
Feb	6.1	6.4	6.5	6.1	7.5	7.1	7.3	6.5	7.0	7.0
Mar	7.1	7.6	7.6	7.7	8.1	8.1	7.9	8.2	9.0	8.4
Apr	6.7	7.4	7.9	7.7	8.3	8.6	8.6	8.1	8.3	8.3
May	6.5	6.9	7.0	8.3	7.4	7.9	7.9	6.9	7.5	7.4
Jun	4.9	5.4	5.0	6.2	4.6	5.1	4.9	6.4	4.6	5.5
Jul	3.0	2.7	2.9	4.3	2.7	3.2	3.1	3.8	3.4	3.4
Total	100.0	100.0	100.0	100.0	100.0	100.0	100.0	100.0	100.0	100.0

**Potatoes: Area, Yield, and Production
Alaska, 2004-2006**

Crop Year	Area		Yield per Cwt	Production
	Planted	Harvested		
	<i>Acres</i>	<i>Acres</i>	<i>Cwt</i>	<i>Cwt</i>
2004	870	810	219	177,000
2005	830	780	213	166,000
2006	860	840	221	186,000

**Potatoes: Farm Disposition, Price, and Value
Alaska, 2004-2006**

Crop Year	Total Used for Seed	Farm Disposition			Price per Cwt	Value	
		Where Grown		Sold		Prod	Sales
		Seed Feed, Home	Shrink and Loss				
	<i>1,000 Cwt</i>	<i>1,000 Cwt</i>	<i>1,000 Cwt</i>	<i>1,000 Cwt</i>	<i>Dollars</i>	<i>1,000 Dollars</i>	<i>1,000 Dollars</i>
2004	17.0	18.0	43.0	116.0	19.60	3,469	2,274
2005	17.0	18.0	33.0	115.0	20.50	3,403	2,358
2006	18.0	20.0	37.0	129.0	20.10	3,739	2,593

**Potatoes: Total Stocks Held by Growers and Local Dealers,
Alaska, 2004-2006**

Crop Year	Oct 1 Current Year	Dec 1 Current Year	Jan 1 Following Year	Feb 1 Following Year
	<i>1,000 Cwt</i>	<i>1,000 Cwt</i>	<i>1,000 Cwt</i>	<i>1,000 Cwt</i>
2004	154.0	137.0	126.0	114.0
2005	145.0	129.0	118.0	106.0
2006	157.0	133.0	123.0	112.0
	Mar 1 Following Year	Apr 1 Following Year	May 1 Following Year	Jun 1 Following Year
	<i>1,000 Cwt</i>	<i>1,000 Cwt</i>	<i>1,000 Cwt</i>	<i>1,000 Cwt</i>
2004	106.0	93.0	70.0	43.0
2005	93.0	80.0	61.0	32.0
2006	99.0	87.0	73.0	45.0

**Potatoes: Marketing Year Average Price Received,
by State and United States, 2005-2006 ¹**

State	2005	2006	State	2005	2006
	<i>Dollars per Cwt</i>	<i>Dollars per Cwt</i>		<i>Dollars per Cwt</i>	<i>Dollars per Cwt</i>
AL	8.55	15.00	NE	8.45	7.40
AK	20.50	20.10	NV	5.50	6.10
AZ	11.50	13.40	NJ	8.05	8.70
CA - All	13.50	12.50	NM	6.80	6.50
Winter	19.10	18.00	NY	12.20	12.00
Spring	13.00	12.00	NC	7.70	10.00
Summer	14.40	15.30	ND - All	6.80	6.55
Fall	7.35	6.75	Fresh	10.30	8.15
CO - All	8.65	7.95	Processing	5.80	6.00
Fresh	9.45	8.80	OH	8.65	8.90
DE	8.65	9.25	OR	5.85	6.45
FL	14.40	18.80	PA	11.40	10.40
ID - All	5.70	5.90	RI	8.50	10.40
Fresh	6.90	6.55	TX	12.10	13.20
Processing	4.90	5.40	VA	10.50	14.70
IL	6.10	6.50	WA - All	5.60	6.25
KS	7.70	10.60	Processing	4.90	5.60
ME	8.25	7.80	WI - All	7.85	7.80
MD	8.30	10.10	Fresh	8.85	8.65
MA	8.80	10.10	Processing	6.55	6.75
MI	7.90	8.35			
MN	6.45	6.15	US - All	7.06	7.33
MO	5.75	6.15	Fresh	10.36	10.27
MT	9.15	9.00	Processing	5.39	5.90

¹ State Marketing Year Average Prices are computed by weighting State monthly prices by estimated sales for the month during the crop year. U.S. Marketing Year Average Price is computed by weighting State Marketing Year Average Prices by estimated sales for the crop year.

**Potatoes: Prices Received by Farmers, Monthly
by State and United States, 2005¹**

State	Jan	Feb	Mar	Apr	May	Jun
	<i>Dollars per Cwt</i>	<i>Dollars per Cwt</i>	<i>Dollars per Cwt</i>	<i>Dollars per Cwt</i>	<i>Dollars per Cwt</i>	<i>Dollars per Cwt</i>
AL						12.20
AZ				22.10	13.00	8.40
CA - All	14.40	15.20	15.50	16.80	12.80	12.40
Winter	17.80	18.00	20.70	21.40		
Spring					13.60	12.80
Summer						
Fall	7.90	7.90	7.90	8.00	8.20	8.65
CO - All	4.65	4.30	4.50	4.70	4.25	4.15
Fresh	4.55	4.25	4.15	4.30	4.35	4.40
FL		25.50	27.60	13.50	10.80	11.80
ID - All	4.10	4.05	4.25	4.40	4.45	4.15
Fresh	3.10	2.60	2.70	2.30	2.80	3.40
Processing	4.60	4.60	4.40	4.40	4.60	4.50
ME	5.90	6.55	6.60	6.95	7.30	7.40
MI	7.15	7.50	7.95	8.75	8.75	
MN	5.75	5.55	5.75	5.00	4.85	4.75
NY	7.75	7.85	8.40	8.40		
NC						7.70
ND - All	5.55	6.20	6.10	6.35	5.85	5.85
Fresh	6.25	5.95	5.45	5.45	6.00	5.85
Processing	5.10	6.10	6.25	6.00	6.20	5.95
OH ²	6.90	7.20	7.25			
OR	4.90	4.80	5.80	6.35	6.90	5.95
PA ²	8.40	7.45	8.00	8.65	8.70	
TX					9.50	10.00
VA						9.15
WA - All	5.35	5.45	5.35	4.90	5.10	5.80
Processing	5.15	5.25	5.20	4.70	5.05	5.35
WI - All	5.75	5.90	6.70	6.50	6.15	
Fresh	5.15	4.35	3.55	3.35	3.40	
Processing	6.30	6.20	7.40	7.70	7.55	
US - All	5.64	5.79	6.44	6.20	6.23	6.30
Fresh	6.13	6.58	8.04	7.22	7.43	8.23
Processing	5.29	5.30	5.37	5.47	5.68	5.51

See footnote(s) at end of table.

--continued

**Potatoes: Prices Received by Farmers, Monthly
by State and United States, 2005 ¹ (continued)**

State	Jul	Aug	Sep	Oct	Nov	Dec
	<i>Dollars per Cwt</i>	<i>Dollars per Cwt</i>	<i>Dollars per Cwt</i>	<i>Dollars per Cwt</i>	<i>Dollars per Cwt</i>	<i>Dollars per Cwt</i>
AL	7.20	8.30				
AZ	8.85	14.30				
CA - All	13.30	14.40	14.40	8.30	12.20	10.60
Winter					17.60	17.30
Spring	12.80					
Summer	14.40	14.40	14.40	14.40		
Fall				7.20	7.20	7.20
CO - All	4.75	7.65	10.10	9.00	8.05	8.25
Fresh	5.00	8.45	10.70	9.70	8.70	8.95
FL						
ID - All	4.15	4.90	5.00	4.95	5.20	5.25
Fresh	3.70	5.60	7.60	7.00	6.60	6.10
Processing	4.40	4.60	4.40	4.50	4.50	4.80
ME	7.70		5.85	6.30	7.90	8.20
MI	8.30	6.10	5.80	6.90	7.40	7.90
MN	4.85	9.60	7.35	6.65	6.25	6.40
NY		11.30	11.40	11.30	11.90	12.00
NC	7.70					
ND - All	6.50	5.50	5.65	6.65	6.45	7.25
Fresh		8.80	8.70	9.40	9.60	10.30
Processing	6.50	4.95	5.05	5.80	5.30	6.30
OH ²						
OR	5.50	5.15	4.80	4.70	5.55	5.70
PA ²						
TX	14.40	12.20	10.50			
VA	10.80	9.50				
WA - All	5.35	5.55	4.95	4.60	5.45	6.25
Processing	5.50	4.50	4.30	4.35	4.60	5.55
WI - All		7.60	6.15	7.20	7.15	8.90
Fresh		9.30	9.20	9.50	9.20	9.45
Processing		5.10	5.10	5.30	4.80	7.10
US - All	7.05	6.61	5.69	5.37	6.36	6.89
Fresh	10.37	11.30	10.77	8.90	9.02	9.17
Processing	5.45	4.92	4.65	4.66	4.89	5.51

¹ Monthly prices refer to all potatoes sold in a given month regardless of the year harvested.

² Monthly price estimates discontinued July 2005.

**Potatoes: Prices Received by Farmers, Monthly
by State and United States, 2006¹**

State	Jan	Feb	Mar	Apr	May	Jun
	<i>Dollars per Cwt</i>	<i>Dollars per Cwt</i>	<i>Dollars per Cwt</i>	<i>Dollars per Cwt</i>	<i>Dollars per Cwt</i>	<i>Dollars per Cwt</i>
AL						16.20
AZ				21.40	14.00	9.30
CA - All	13.40	11.10	13.00	17.90	11.80	11.30
Winter	14.80	18.20	21.30	24.80		
Spring					12.70	11.50
Summer						
Fall	7.20	7.15	7.50	7.55	7.55	7.55
CO - All	8.55	8.75	8.85	8.75	8.30	8.20
Fresh	9.50	9.85	9.70	9.35	9.15	9.10
FL			40.00	18.70	11.90	12.20
ID - All	5.15	5.30	6.15	6.55	6.40	6.10
Fresh	5.80	6.10	6.70	6.70	7.00	7.20
Processing	4.90	4.90	5.10	5.20	5.40	5.40
ME	8.20	8.40	8.75	9.45	9.30	8.55
MI	8.50	8.80	9.00	10.50	11.10	
MN	5.95	6.45	6.00	6.00	5.80	5.20
NY	12.70	12.70	13.10	13.10	15.50	
NC						10.40
ND - All	7.30	7.40	7.75	7.60	7.75	6.45
Fresh	11.00	12.10	13.90	12.00	13.30	13.00
Processing	6.25	6.30	6.25	5.90	6.55	6.30
OR	5.65	5.35	6.20	6.40	6.90	9.35
TX					10.40	10.80
VA						13.10
WA - All	6.75	5.95	6.45	6.35	6.40	6.55
Processing	5.75	5.30	5.55	5.50	5.80	5.85
WI - All	7.75	8.30	8.95	9.35	8.45	7.60
Fresh	8.55	9.15	9.00	8.30	8.10	7.65
Processing	7.25	7.60	8.65	9.40	8.70	7.50
US - All	7.08	6.76	8.50	8.35	7.83	8.41
Fresh	9.58	9.13	13.78	12.32	10.51	11.90
Processing	5.65	5.59	5.74	6.04	6.30	6.46

See footnote(s) at end of table.

--continued

**Potatoes: Prices Received by Farmers, Monthly
by State and United States, 2006¹ (continued)**

State	Jul	Aug	Sep	Oct	Nov	Dec
	<i>Dollars per Cwt</i>	<i>Dollars per Cwt</i>	<i>Dollars per Cwt</i>	<i>Dollars per Cwt</i>	<i>Dollars per Cwt</i>	<i>Dollars per Cwt</i>
AL	14.00	15.10				
AZ	11.50					
CA - All	13.80	15.90	14.50	9.35	6.90	8.60
Winter					13.80	17.10
Spring	12.80					
Summer	15.50	15.90	14.50	14.50		
Fall				6.60	6.65	6.65
CO - All	9.15	10.10	8.25	8.45	7.95	7.85
Fresh	10.20	10.50	9.10	9.40	8.45	8.55
FL						
ID - All	7.35	6.60	5.10	5.40	5.55	5.40
Fresh	8.70	9.00	7.00	6.50	6.10	5.90
Processing	5.90	5.50	4.70	5.10	5.10	5.20
ME	8.10		6.25	6.50	8.15	8.25
MI	10.00	7.75	7.00	6.75	8.05	8.45
MN	6.15	8.60	7.05	6.25	6.00	6.45
NY		15.20	13.60	13.20	11.90	11.40
NC	9.15					
ND - All	6.60	5.95	5.80	7.00	6.95	6.50
Fresh		8.15	7.00	14.20	8.30	7.65
Processing	6.60	5.50	5.65	5.35	6.25	6.05
OR	9.40	5.75	5.60	4.90	6.90	6.45
TX	14.80	14.70	13.70			
VA	15.10	14.30				
WA - All	7.90	6.40	5.50	5.05	6.25	6.80
Processing	6.30	5.05	5.00	4.90	5.60	6.00
WI - All		9.50	6.80	7.55	7.20	7.60
Fresh		12.70	9.75	9.70	8.55	9.05
Processing		5.90	5.55	5.55	5.80	6.05
US - All	9.77	7.70	6.12	5.76	6.59	6.79
Fresh	13.14	13.99	9.67	9.06	8.34	8.38
Processing	6.51	5.47	5.22	5.10	5.70	5.96

¹ Monthly prices refer to all potatoes sold in a given month regardless of the year harvested.

Fall Potatoes: Percent of Varieties Planted, 2005-2006

The National Agricultural Statistics Service conducts variety surveys in 8 States, accounting for 89 percent of the U.S. fall potato production for both the 2005 and 2006 crops. Colorado data are from a growers potato variety survey. The remaining 7 States conduct objective yield surveys where all producing areas are sampled in proportion to planted acreage. Variety data are actual percentages from these surveys.

**Fall Potatoes: Percent of Major Varieties Planted,
Selected States and 8 States Total, 2005 Crop**

State	Varieties	Pct. of Planted Acres	State	Varieties	Pct. of Planted Acres
CO	R Norkotah	56.1	MN	R Burbank	58.2
	Yukon Gold	8.0		Norland	23.8
	Rio Grande R	7.7		Sangre	2.0
	R Nugget	6.4		Dakota Pearl	2.0
	Centennial R	4.6		Dakota Rose	1.8
	Cherry Red	0.8		Goldrush	1.6
	Sangre	0.8		Cascade	1.3
	Keystone R	0.7		Alturas	1.2
	Silverton R	0.7		Red Pontiac	1.1
	Latona	0.7		Chieftain	1.0
	Other	13.5		Other	6.0
	Total	100.0		Total	100.0
	ID	R Burbank		63.1	ND
Ranger R		15.1	Norland	6.9	
R Norkotah		11.8	Ranger R	5.3	
Alturas		2.8	Shepody	5.2	
Shepody		1.3	Frito-Lay	4.6	
Other		5.9	Yukon Gold	4.6	
Total		100.0	Dakota Pearl	4.4	
ME	R Burbank	42.5	OR	NorValley	2.3
	Frito-Lay	17.1		Umatilla R	1.6
	Shepody	7.2		Sangre	1.4
	Atlantic	3.5		Atlantic	1.3
	Superior	3.4		Other	5.6
	Yukon Gold	2.8		Total	100.0
	Ontario	2.8		Ranger R	25.3
	Goldrush	2.7		R Norkotah	23.8
	Norwis	2.4		Shepody	17.1
	Katahdin	2.4		R Burbank	15.2
	Norland	2.3		Alturas	7.7
	Snowden	2.2		Frito-Lay	2.5
	R Norkotah	1.6		Umatilla R	2.1
	Reba	1.4		Yukon Gold	1.5
	Monona	1.0		Other	4.8
	Other	4.7		Total	100.0
	Total	100.0			

--continued

**Fall Potatoes: Percent of Major Varieties Planted,
Selected States and 8 States Total, 2005 Crop (continued)**

State	Varieties	Pct. of Planted Acres	State	Varieties	Pct. of Planted Acres	
WA	R Burbank	40.6	TOTAL (8 Sts)	R Burbank	46.5	
	Ranger R	16.0		R Norkotah	13.8	
	R Norkotah	14.4		Ranger R	10.5	
	Umatilla R	10.8		Norland	3.5	
	Shepody	4.7		Frito-Lay	3.4	
	Alturas	3.3		Shepody	3.2	
	Chieftain	3.0		Umatilla R	2.5	
	Yukon Gold	1.2		Alturas	2.1	
	Other	6.0		Yukon Gold	1.7	
					Goldrush	1.3
	Total	100.0		Atlantic	0.7	
WI				Dakota Pearl	0.6	
	R Burbank	19.2		Snowden	0.6	
	R Norkotah	18.1		Chieftain	0.6	
	Frito-Lay	17.8		R Nugget	0.6	
	Goldrush	12.3		Rio Grande R	0.5	
	Norland	11.8		Silverton R	0.5	
	Silverton R	6.0		Superior	0.5	
	Snowden	4.6		Sangre	0.3	
	Superior	3.6		Centennial R	0.3	
	Atlantic	2.2		NorValley	0.3	
	Pike	1.0		Bannock	0.3	
	Other	3.4		Cascade	0.2	
				Red LaSoda	0.2	
		Total	100.0		Ontario	0.2
					Viking Purple	0.2
					Pike	0.2
					Norwis	0.2
					Katahdin	0.2
					Summit	0.2
					Red Pontiac	0.1
					NorDonna	0.1
					CalRed	0.1
					Dakota Rose	0.1
					Viking	0.1
					Reba	0.1
					Ivory Crisp	0.1
					Monona	0.1
					Chipeta	0.1
					Andover	0.1
					Sierra Gold	0.1
					Cherry Red	0.1
					Other	2.9
					Total	100.0

**Fall Potatoes: Percent of Major Varieties Planted,
Selected States and 8 States Total, 2006 Crop**

State	Varieties	Pct. of Planted Acres	State	Varieties	Pct. of Planted Acres
CO	R Norkotah	60.3	MN	R Burbank	58.7
	Rio Grande R	9.2		Norland	21.0
	R Nugget	5.9		Goldrush	2.3
	Centennial R	5.5		Dakota Rose	1.9
	Yukon Gold	4.5		Snowden	1.7
	Chipeta	0.6		Sangre	1.5
	Latona	0.6		Umatilla R	1.5
	Sangre	0.6		Ranger R	1.3
	Other	12.8		R Norkotah	1.2
				Red Pontiac	1.1
	Total	100.0	Yukon Gold	1.0	
ID	R Burbank	66.0	ND	Other	6.8
	Ranger R	12.7		Total	100.0
	R Norkotah	10.2		R Burbank	45.2
	Western R	2.8		Norland	11.2
	Alturas	2.2		Shepody	9.0
	Norland	1.0		Ranger R	5.9
	Other	5.1		Dakota Pearl	4.2
	Total	100.0	NorValley	3.3	
ME	R Burbank	42.5	OR	Frito-Lay	3.1
	Frito-Lay	17.1		Goldrush	2.2
	Shepody	5.2		Umatilla R	1.7
	Superior	4.5		Red LaSoda	1.5
	Katahdin	3.1		Other	12.7
	Yukon Gold	3.0		Total	100.0
	Ontario	2.9		R Burbank	25.9
	Norland	2.4		Ranger R	22.5
	Norwis	2.3		R Norkotah	20.4
	R Norkotah	2.1		Shepody	13.5
	Reba	2.1		Alturas	5.5
	Snowden	2.1		Frito-Lay	2.6
	Monona	1.9		Umatilla R	2.2
	Atlantic	1.5		Yukon Gold	1.8
	Goldrush	1.0		Chieftain	1.6
	Andover	1.0		Sierra Gold	1.0
	Other	5.3		Other	3.0
	Total	100.0	Total	100.0	

--continued

**Fall Potatoes: Percent of Major Varieties Planted,
Selected States and 8 States Total, 2006 Crop (continued)**

State	Varieties	Pct. of Planted Acres	State	Varieties	Pct. of Planted Acres
WA	R Burbank	34.9	TOTAL (8 Sts)	R Burbank	46.0
	Ranger R	15.9		R Norkotah	13.1
	R Norkotah	14.0		Ranger R	9.5
	Umatilla R	8.3		Norland	4.1
	Shepody	6.9		Shepody	3.7
	Chieftain	4.4		Frito-Lay	3.7
	Alturas	3.7		Umatilla R	2.1
	Frito-Lay	3.1		Alturas	1.8
	CalRed	1.7		Goldrush	1.4
	Yukon Gold	1.6		Yukon Gold	1.2
	Snowden	1.1		Western R	1.1
	Cascade	1.1		Chieftain	0.9
	Other	3.3		Snowden	0.8
	Total	100.0		Rio Grande R	0.7
WI			Dakota Pearl	0.6	
			Superior	0.6	
			NorValley	0.5	
			Silverton R	0.4	
			R Nugget	0.4	
			CalRed	0.4	
			Centennial R	0.4	
			Atlantic	0.3	
			Red LaSoda	0.2	
			Cascade	0.2	
			Viking Purple	0.2	
			Sangre	0.2	
			Katahdin	0.2	
			CalWhite	0.2	
			Ontario	0.2	
			Bannock	0.2	
			Dakota Rose	0.2	
			Norwis	0.2	
			Red Pontiac	0.2	
			Pike	0.1	
			Reba	0.1	
			Monona	0.1	
			NorDonna	0.1	
			GemStar	0.1	
			Gem R	0.1	
			Ivory Crisp	0.1	
			NorGold	0.1	
			Kennebec	0.1	
Satina	0.1				
Summit	0.1				
Chipeta	0.1				
Andover	0.1				
Marcy	0.1				
Sierra Gold	0.1				
Viletta Rose	0.1				
Other	2.5				
Total	100.0	Total	100.0		

Potato Objective Yield Data

The National Agricultural Statistics Service conducted potato objective yield surveys in the 7 major fall producing States in 2006. These 7 States account for 83 percent of the fall potato production. Sample plots were located in potato fields that were selected on a random basis using a scientifically designed sampling procedure. Field workers recorded counts and measurements. Survey data from the objective yield counts are presented in the following two tables and are provided to show information about the crop and trends in production.

Fall Potatoes: Harvest Loss by Type, Seven Objective Yield States, 2005-2006^{1 2}

State	Crop Year	Reds	Whites	Russets	All Types
		<i>Cwt per Acre</i>	<i>Cwt per Acre</i>	<i>Cwt per Acre</i>	<i>Cwt per Acre</i>
ID	2005			28	28
	2006			31	30
ME	2005	9	15	15	14
	2006		20	23	21
MN	2005	19	10	28	23
	2006	10	28	24	20
ND	2005	15	17	52	37
	2006	13	21	38	28
OR	2005		18	27	26
	2006		18	36	34
WA	2005			22	22
	2006		15	20	19
WI	2005		15	12	13
	2006	24	10	13	14

¹ Potatoes left in the field at time of harvest. Based on counts in potato fields selected for postharvest samples.

² Missing data represents insufficient number of samples.

**Fall Potatoes: Number of Hills by Type, Seven Objective
Yield States, 2005-2006¹**

State	Crop Year	Reds		Whites		Russets	
		Number of Samples	Avg No. Hills per Acre	Number of Samples	Avg No. Hills per Acre	Number of Samples	Avg No. Hills per Acre
ID	2005	5	13,665	9	12,740	265	12,502
	2006	6	13,811	4	12,019	276	12,480
ME	2005	7	13,005	66	12,240	79	9,007
	2006	5	14,532	70	12,689	64	10,208
MN	2005	44	11,272	8	11,011	94	12,589
	2006	36	12,331	10	12,158	84	12,498
ND	2005	20	9,540	40	10,516	101	11,938
	2006	21	11,257	42	10,511	78	11,977
OR	2005	3	15,278	22	13,727	80	13,879
	2006			21	14,496	95	13,239
WA	2005	5	15,184	14	15,193	167	15,009
	2006	13	16,358	27	13,801	151	14,409
WI	2005	15	15,501	33	15,319	80	13,119
	2006	13	15,372	36	14,717	73	12,973

¹ Based on row measurements and counts in potato fields selected for objective yield samples.

Potato Size and Grade

Size and grade measurements came from potatoes harvested in the objective yield survey sample plots. Potatoes were harvested from six hills per sample randomly selected in each State using a scientifically designed sampling procedure. Potatoes were sent to laboratories for sizing and grading according to accepted U.S. fresh grading standards. The following tables contain percent measurements as they actually occurred.

**Fall Potatoes: Grading Categories by Type and State,
2005-2006¹**

Type and State	No. 1 2 Inch Minimum ²		No. 2 or Processing Usable 1 1/2 Inch Minimum ³		Cull ⁴		Total	
	2005	2006	2005	2006	2005	2006	2005	2006
	<i>Percent</i>	<i>Percent</i>	<i>Percent</i>	<i>Percent</i>	<i>Percent</i>	<i>Percent</i>	<i>Percent</i>	<i>Percent</i>
Round Red Potatoes								
MN	70.7	66.3	20.6	24.5	8.7	9.2	100.0	100.0
Round White Potatoes								
ME ⁵	83.2	78.1	8.1	9.6	8.7	12.3	100.0	100.0
WI	75.5	80.5	24.1	19.2	0.4	0.3	100.0	100.0
Long Potatoes: (Russet and Shepody)								
ID ⁶	74.8	77.0	24.0	21.8	1.2	1.2	100.0	100.0
ME ⁵	74.8	62.9	15.3	20.3	9.9	16.8	100.0	100.0
MN	72.2	70.7	22.2	19.9	5.6	9.4	100.0	100.0
ND	72.1	65.8	19.0	23.1	8.9	11.1	100.0	100.0
OR	77.7	75.3	21.2	23.7	1.1	1.0	100.0	100.0
WA	81.7	80.2	17.1	18.0	1.2	1.8	100.0	100.0
WI	81.3	80.8	18.6	18.3	0.1	0.9	100.0	100.0

¹ Gross yield basis.

² Potatoes which meet the requirements for US #1, as stated in United States Standards for Grades of Potatoes, United States Department of Agriculture, Agricultural Marketing Service.

³ Potatoes which meet the requirements for US #2, as stated in United States Standards for Grades of Potatoes, United States Department of Agriculture, Agricultural Marketing Service.

⁴ Potatoes not meeting the requirements for US #1 or US #2, as stated in United States Standards for Grades of Potatoes, United States Department of Agriculture, Agricultural Marketing Service.

⁵ Percent of net yield - adjusted for field loss.

⁶ Russets only.

**Round Potatoes: Size Categories by Type and State,
2005-2006¹**

Year Type State and	Inches							Total
	1 1/2 - 1 7/8	1 7/8 - 2	2 - 2 1/4	2 1/4 - 2 1/2	2 1/2 - 3 1/2	3 1/2 - 4	4 Inch and over	
	<i>Percent</i>	<i>Percent</i>	<i>Percent</i>	<i>Percent</i>	<i>Percent</i>	<i>Percent</i>	<i>Percent</i>	<i>Percent</i>
2005								
Red Potatoes								
MN	6.3	5.1	14.4	19.7	52.1	2.1	0.3	100.0
White Potatoes								
ME ²	2.3	2.8	8.7	15.2	61.5	8.5	1.0	100.0
WI	3.4	2.4	8.9	12.0	63.1	9.9	0.3	100.0
2006								
Red Potatoes								
MN	5.2	3.4	12.8	19.9	57.1	1.2	0.4	100.0
White Potatoes								
ME ²		2.1	10.8	18.5	63.7	4.2	0.7	100.0
WI	3.0	2.8	8.6	13.4	62.8	8.1	1.3	100.0

¹ Gross yield basis.

² Percent of net yield - adjusted for field loss.

**Long Potatoes (Russet & Shepody): Size Categories,
Maine, 2005-2006¹**

Crop Year	Inches		Ounces						Total
	1 1/2 - 1 7/8	1 7/8 - 2	2 in. or 4-6	6-8	8-10	10-12	12-14	14 and Over	
	<i>Percent</i>	<i>Percent</i>	<i>Percent</i>	<i>Percent</i>	<i>Percent</i>	<i>Percent</i>	<i>Percent</i>	<i>Percent</i>	<i>Percent</i>
2005	4.4	3.9	31.3	18.4	15.7	10.0	5.9	10.4	100.0
2006	5.5	6.3	32.7	18.6	13.4	8.3	5.5	9.7	100.0

¹ Percent of net yield - adjusted for field loss.

**Long Potatoes (Russet & Shepody): Size Categories
by State, 2005-2006¹**

State and Year	Inches			Ounces										Total
	1 1/2 - 1 5/8	1 5/8 - 1 7/8	1 7/8 - 2	2 in. or 4-6	6	7	8	9	10	11	12	13	14 and Over	
	<i>Percent</i>	<i>Percent</i>	<i>Percent</i>	<i>Percent</i>	<i>Percent</i>	<i>Percent</i>	<i>Percent</i>	<i>Percent</i>	<i>Percent</i>	<i>Percent</i>	<i>Percent</i>	<i>Percent</i>	<i>Percent</i>	<i>Percent</i>
2005														
ID ²	1.9	7.2	4.2	25.6	9.2	8.9	7.7	6.7	5.6	4.5	4.0	2.6	11.9	100.0
MN	1.8	8.0	5.6	29.3	11.7	10.3	8.0	6.4	4.6	4.4	2.9	2.0	5.0	100.0
ND	1.4	6.7	4.5	25.3	11.2	11.1	8.0	7.7	4.9	4.6	3.8	2.4	8.4	100.0
OR	2.0	4.8	3.4	23.8	9.0	9.1	8.2	7.4	5.4	4.7	4.3	3.3	14.6	100.0
WA	0.8	3.4	2.5	22.5	8.6	9.4	7.9	7.3	6.3	5.2	5.1	3.8	17.2	100.0
WI	1.1	5.9	4.8	27.2	10.0	9.3	8.5	7.0	5.8	4.8	4.1	3.0	8.5	100.0
2006														
ID ²	1.6	6.8	3.6	26.1	9.6	9.0	7.0	6.4	5.3	4.7	3.5	3.1	13.3	100.0
MN	1.5	6.3	5.4	25.8	10.8	9.5	8.5	6.6	5.3	4.6	3.1	3.3	9.3	100.0
ND	1.0	6.6	4.8	28.0	10.8	9.1	8.4	6.3	5.2	4.7	3.8	2.3	9.0	100.0
OR	1.7	5.3	3.1	21.9	8.4	9.8	7.7	6.7	7.1	4.9	3.9	3.6	15.9	100.0
WA	0.9	4.3	2.5	23.6	9.0	9.6	8.7	7.3	6.2	5.2	4.5	2.7	15.5	100.0
WI	0.8	5.2	4.5	28.1	11.2	9.1	8.3	7.6	5.3	4.4	4.3	2.7	8.5	100.0

¹ Gross yield basis.

² Russets only.

Information Contacts

Listed below are the commodity statisticians in the Crops Branch of the National Agricultural Statistics Service to contact for additional information.

Jeff Geuder, Chief (202) 720-2127

Field Crops Section

Greg Thessen, Head (202) 720-2127
Shiela Corley - Cotton, Cotton Ginnings (202) 720-5944
Todd Ballard - Wheat, Rye (202) 720-8068
Ty Kalaus - Corn, Proso Millet, Flaxseed (202) 720-9526
Greg Thessen - Peanuts, Rice (202) 720-2127
Travis Thorson - Soybeans, Sunflower, Other Oilseeds (202) 720-7369
King Whetstone - Hay, Oats, Sorghum (202) 690-3234
Dawn Keen - Crop Weather, Barley, Sugar Crops (202) 720-7621

Fruits, Vegetables & Special Crops Section

Lance Honig, Head (202) 720-2127
Leslie Colburn - Berries, Grapes, Maple Syrup, Tobacco (202) 720-7235
Debbie Flippin - Fresh and Processing Vegetables, Onions,
 Strawberries (202) 720-2157
Rich Holcomb - Citrus, Tropical Fruits (202) 720-5412
Doug Marousek - Floriculture, Nursery, Tree Nuts (202) 720-4215
Dan Norris - Austrian Winter Peas, Dry Edible Peas, Lentils,
 Mint, Mushrooms, Peaches, Pears,
 Wrinkled Seed Peas (202) 720-3250
Faye Propsom- Apples, Apricots, Cherries, Cranberries,
 Plums, Prunes (202) 720-4288
Kim Ritchie – Hops (360) 902-1940
Cathy Scherrer - Dry Beans, Potatoes, Sweet Potatoes (202) 720-4285

ACCESS TO REPORTS!!

For your convenience, there are several ways to obtain NASS reports, data products, and services:

INTERNET ACCESS

All NASS reports are available free of charge on the worldwide Internet. For access, connect to the Internet and go to the NASS Home Page at: www.nass.usda.gov.

E-MAIL SUBSCRIPTION

All NASS reports are available by subscription free of charge direct to your e-mail address. Starting with the NASS Home Page at www.nass.usda.gov, under the right navigation, *Receive reports by Email*, click on **National** or **State**. Follow the instructions on the screen.

PRINTED REPORTS OR DATA PRODUCTS

CALL OUR TOLL-FREE ORDER DESK: 800-999-6779 (U.S. and Canada)
Other areas, please call 703-605-6220 FAX: 703-605-6900
(Visa, MasterCard, check, or money order acceptable for payment.)

ASSISTANCE

For **assistance** with general agricultural statistics or further information about NASS or its products or services, contact the **Agricultural Statistics Hotline** at **800-727-9540**, 7:30 a.m. to 4:00 p.m. ET, or e-mail: nass@nass.usda.gov.

The U.S. Department of Agriculture (USDA) prohibits discrimination in all its programs and activities on the basis of race, color, national origin, age, disability, and where applicable, sex, marital status, familial status, parental status, religion, sexual orientation, genetic information, political beliefs, reprisal, or because all or a part of an individual's income is derived from any public assistance program. (Not all prohibited bases apply to all programs.) Persons with disabilities who require alternative means for communication of program information (Braille, large print, audiotape, etc.) should contact USDA's TARGET Center at (202) 720-2600 (voice and TDD).

To file a complaint of discrimination, write to USDA, Director, Office of Civil Rights, 1400 Independence Avenue, S.W., Washington, D.C. 20250-9410, or call (800) 795-3272 (voice) or (202) 720-6382 (TDD). USDA is an equal opportunity provider and employer.

USDA Data Users' Meeting

October 29, 2007

Crowne Plaza Chicago O'Hare

Rosemont, Illinois

(847) 671-6350

The USDA's National Agricultural Statistics Service will be organizing an open forum for data users. The purpose will be to provide updates on pending changes in the various statistical and information programs and seek comments and input from data users. Other USDA agencies to be represented will include the Agricultural Marketing Service, the Economic Research Service, the Foreign Agricultural Service, and World Agricultural Outlook Board. The Foreign Trade Division from the Census Bureau will also be included in the meeting.

For registration details or additional information for the Data Users' Meeting, see the NASS homepage at www.nass.usda.gov/forum/ or contact Marjorie Taylor (NASS) at (202) 690-8141 or at marjorie_taylor@nass.usda.gov.

This Data Users' Meeting precedes an Industry Outlook meeting that will be held at the same location on October 30, 2007. The Outlook meeting brings together analysts from various commodity sectors to discuss the outlook situation. For registration details or additional information for the Industry Outlook Meeting see the Livestock and Marketing Information Center (LMIC) homepage at www.lmic.info or contact Jim Robb at (720) 544-2941 or at robb@lmic.info.